

7500 ソフトウェア使用手順

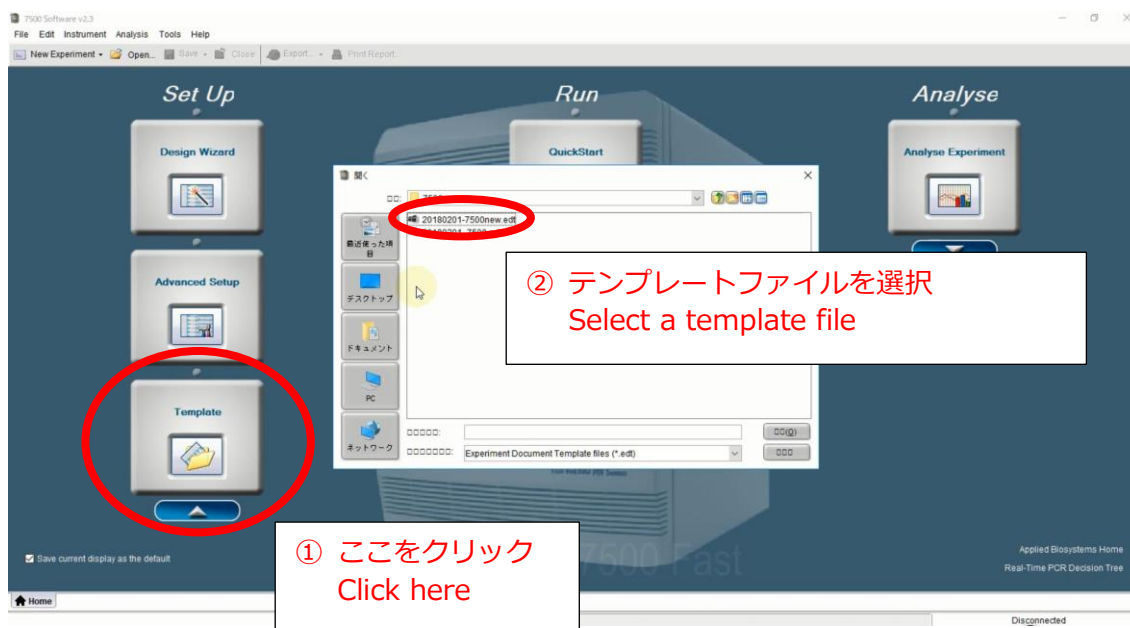
Procedure for 7500 software

1. StepOne ソフトウェアを起動する

Start up the StepOne software

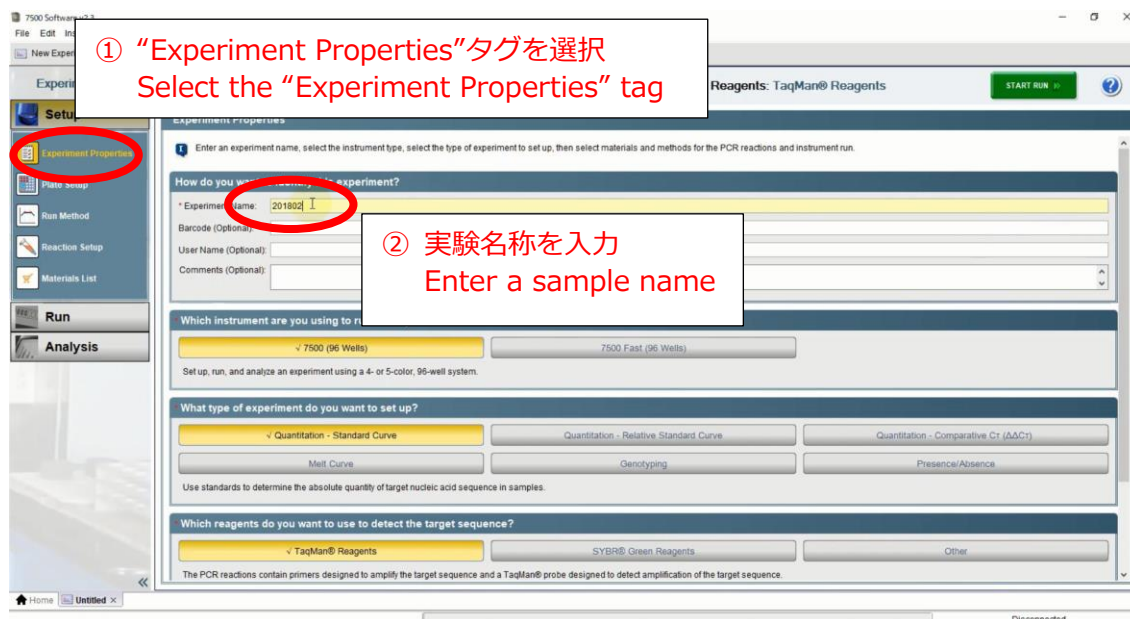
2. テンプレートファイルを選択する

Select a template file



3. 実験名称を入力する

Enter an experimental name



4. プレートを設定アップする。

Set up the plate settings

① “Plate Setup”タグを選択
Select the “Plate Setup” tag

② サンプル名を入力
Enter a sample name

③ “Assign Targets and Samples”タブを選択
Select the “Assign Targets and Samples” tab

④ 測定対象ウェルを全て選択
Select all well targeted for measurement

⑤ チェックボックスを ON
Turn on the check box

4. 測定を開始する。

Start measurement

7500 Software v2.3
File Edit Instrument Analysis Tools Help
New Experiment Open Save Close Export Print Report

Experiment Menu Experiment: 20180201 Type: Standard Curve Reagents: TaqMan® Reagents **START RUN**

Define Targets and Samples Assign Targets and Samples

Instructions: To set up standards: Click "Define and Set Up Standards."
To set up unknowns: Select wells, assign target(s), select "U" (Unknown) as the task for each target assignment, then assign a sample.
To set up negative controls: Select wells, assign target(s), then select "N" (Negative Control) as the task for each target assignment.

Assign target(s) to the selected wells.

Assign	Target	Task	Quan
<input type="checkbox"/>	GAPDH	<input type="checkbox"/> U <input type="checkbox"/> S <input type="checkbox"/> N	
<input type="checkbox"/>	TBP	<input type="checkbox"/> U <input type="checkbox"/> S <input type="checkbox"/> N	

Mixed Unknown Standard Negative Control

Define and Set Up Standards

Assign sample(s) to the selected wells.

Assign	Sample
<input checked="" type="checkbox"/>	001

Assign sample(s) of selected well(s) to biological group.

Assign	Biological Group
--------	------------------

Select the dye to use as the passive reference

Show in Wells View Legend

	1	2	3	4	5	6	7	8	9	10	11	12
A												
B												
C												
D												
E												
F												
G												
H												

Wells: Unknown Standard Negative Control 90 Empty

Home Untitled x Disconnected

**“START RUN”ボタンを押下
Click the “START RUN” button**

5. 測定結果を確認する。

Confirm the measurement results

① "Analysis"中の"Amplification Plot" タグを選択
Select the "Amplification Plot" tag in the "Analysis" window

② "Analysis Settings"ボタンを押下
Click the "Analysis Settings" button

③ "Edit Default Settings"ボタンを押下
Click the "Edit Default Settings" button

④ チェックボックスをOFF
Turn OFF the check boxes

⑤ "Save Changes"ボタンを押下
Click the "Save Changes" button

⑥ "Apply Analysis Settings"ボタンを押下
Click the "Apply Analysis Settings"

Target	Threshold	Baseline Start Cycle	Baseline End Cycle
HSV1	AUTO	AUTO	AUTO
HSV2	AUTO	AUTO	AUTO
HTLV1	AUTO	AUTO	AUTO
TBP	AUTO	AUTO	AUTO
TP	AUTO	AUTO	AUTO
Toxoplasma	AUTO	AUTO	AUTO

必要に応じて拡大
Zooming-in, if necessary

⑦ Ct 値を確認
Confirm the Ct values

Well	Target	Ct
8	GA	35.9
9	HH	36
10	VZV	35
11	HH	36
12	CMV	33
13	EBV	35
14	HTLV	35
15	TP	34.9